

GALLERY RIG

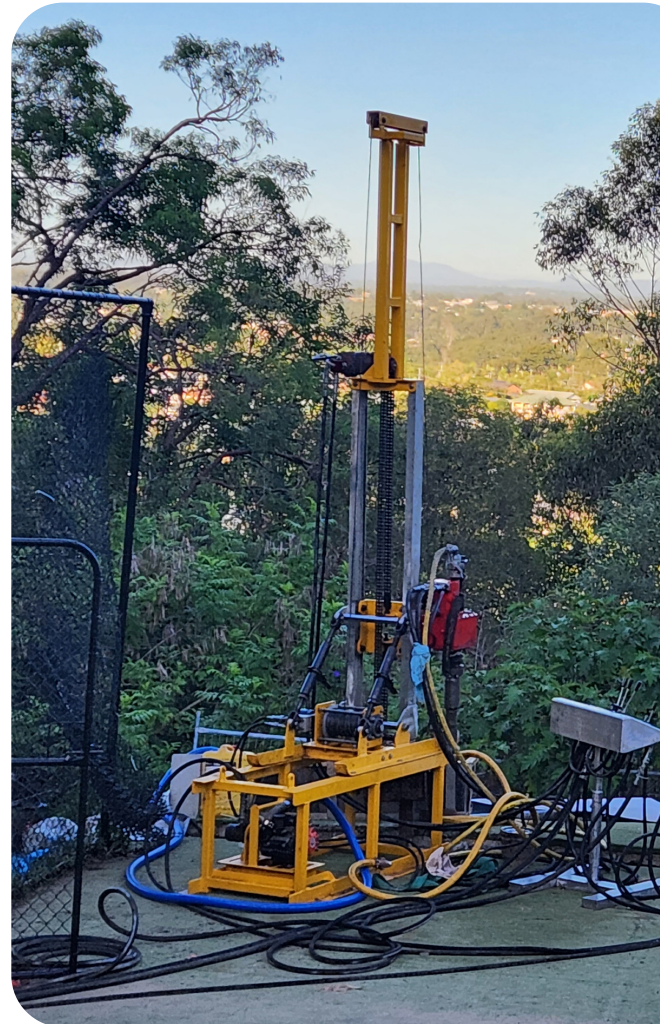


GALLERY RIG

SPECIFICATIONS



| | |
|------------------------------------|-----------------------|
| Carrier | Mobile Set-up |
| Auger Depth | 15m |
| Rotary Mud | 30m |
| Coring # | 80m |
| Hydraulic Hose Reach | 100m |
| SPT/U50/U63/U75 | Yes |
| | |
| Diesel Engine | 31kw |
| Rotary Drive Torque (Low) | 110 RPM |
| Rotary Drive Torque (High) | 350 RPM |
| Mass | 400kg to 2100kg |
| Mast Height (Short Mast) | 2.6m (Stroke 1600mm) |
| Mast Height (Short Plus Extension) | 4.2m (Stroke 2400mm) |
| Mast Height (Long Mast) | 3.3m (Stroke 2400mm) |
| Mast Height (Long Plus Extension) | 4.8m (Stroke 2400mm) |
| Mud Pump | 140 litres per minute |
| Head Swing | Manual |
| SPT Hammer | Gemco Auto Tripping |
| Pull Back | 1000kg |
| Main Winch | 400kg |



FOR BOOKINGS, PLEASE CONTACT

PROTESTENGINEERING.COM | [1300 742 004](tel:1300742004) | ADMIN@PROTESTENGINEERING.COM